

# \$635,000 - 29 Pebble Creek Cove, Raymond

MLS® #A2192392

**\$635,000**

4 Bedroom, 3.00 Bathroom, 1,291 sqft  
Residential on 0.39 Acres

NONE, Raymond, Alberta

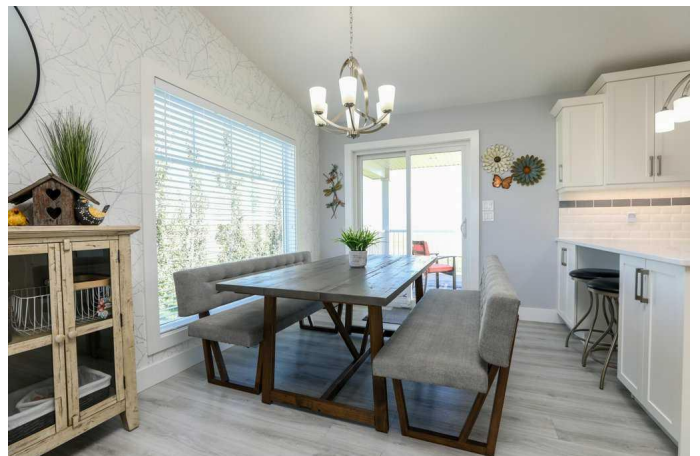
Stunning Bi-Level Home in StoneGate Meadows, Raymond!

Discover this beautifully designed bi-level home in the sought-after community of StoneGate Meadows, just 25 minutes from Lethbridge. Offering 2,359 sq. ft. of developed living space on an expansive 16,977 sq. ft. lot, this property provides the perfect blend of indoor comfort and outdoor enjoyment.

Step inside to 1,291 sq. ft. of main-floor living, featuring a spacious living room, a stylish kitchen with quartz countertops, and a bright dining area. The primary suite boasts a walk-in closet and a 3-piece ensuite, while a second bedroom and 4-piece main bath complete this level.

The fully developed lower level (1,068 sq. ft.) is ideal for family living, featuring two additional oversized bedrooms, a 4-piece bathroom, and a cozy family room with an upgraded gas fireplace. Sunshine windows fill the space with natural light, creating a warm and inviting atmosphere. This level also includes a laundry room with a wash sink, cold storage, and practical upgrades like a water filtration system and water softener.

Outside, enjoy a beautifully landscaped yard with a two-tier deck, a 10'x12' shed, and plenty of under-deck storage. The underground sprinkler system ensures easy maintenance, with irrigated water available for



just \$14/month.

For those who need extra space, the attached triple heated garage is a standout feature.

Thoughtfully designed with upgraded cabinets, this space is perfect for organization, hobbies, or projects.

Set in a quiet, family-friendly neighborhood, this home offers a great combination of space, comfort, and convenience. Take a look at the photos and virtual tour to see all this home has to offer!

Built in 2017

### **Essential Information**

MLS® #	A2192392
Price	\$635,000
Bedrooms	4
Bathrooms	3.00
Full Baths	3
Square Footage	1,291
Acres	0.39
Year Built	2017
Type	Residential
Sub-Type	Detached
Style	Acreage with Residence, Bi-Level
Status	Active

### **Community Information**

Address	29 Pebble Creek Cove
Subdivision	NONE
City	Raymond
County	Warner No. 5, County of
Province	Alberta
Postal Code	T0K 2S0

### **Amenities**

Parking Spaces	9
Parking	Triple Garage Attached
# of Garages	3

## Interior

Interior Features	Pantry, Quartz Counters, Storage, Walk-In Closet(s)
Appliances	Central Air Conditioner, Dishwasher, Garage Control(s), Microwave Hood Fan, Refrigerator, Stove(s), Washer/Dryer, Window Coverings, Garburator
Heating	Forced Air
Cooling	Central Air
Fireplace	Yes
# of Fireplaces	1
Fireplaces	Gas
Has Basement	Yes
Basement	Finished, Full

## Exterior

Exterior Features	Private Yard, Storage
Lot Description	Back Yard, Front Yard, Landscaped, No Neighbours Behind, Underground Sprinklers
Roof	Asphalt Shingle
Construction	Stone, Vinyl Siding
Foundation	Poured Concrete

## Additional Information

Date Listed	February 4th, 2025
Days on Market	86
Zoning	Residential

## Listing Details

Listing Office	RE/MAX REAL ESTATE - LETHBRIDGE
----------------	---------------------------------

Data is supplied by Pillar 9â„¢ MLS® System. Pillar 9â„¢ is the owner of the copyright in its MLS® System. Data is deemed reliable but is not guaranteed accurate by Pillar 9â„¢. The trademarks MLS®, Multiple Listing Service® and the associated logos are owned by The Canadian Real Estate Association (CREA) and identify the quality of services provided by real estate professionals who are members of CREA. Used under license.